

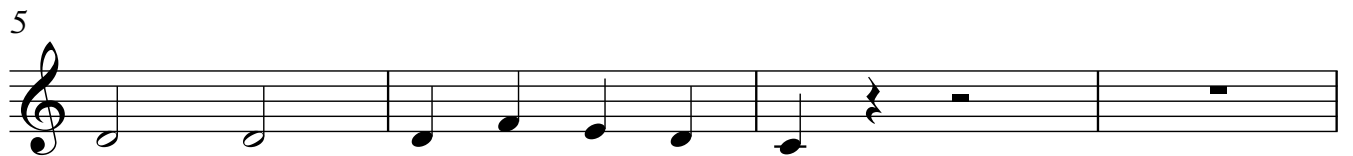
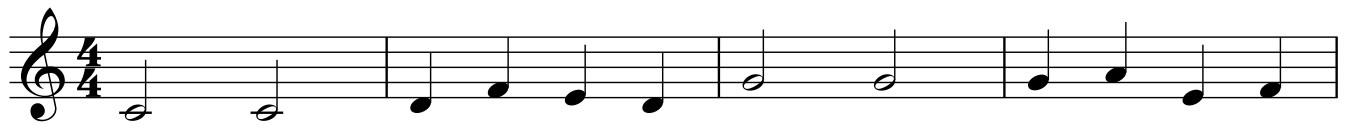
# Rubber Band Repertoire Book

## The Bigger Bounce

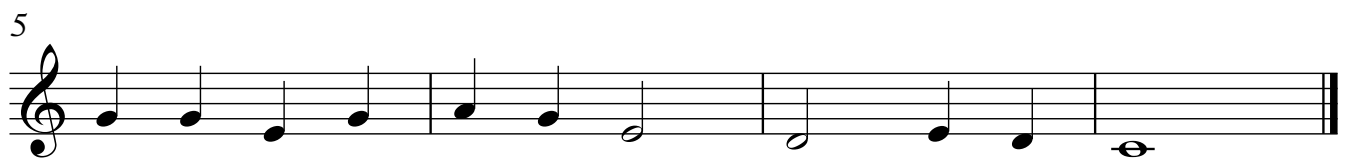
1. Can Can
2. Camptown Races
3. Theme from Symphony no. 1 (Brahms)
4. Pop Goes The Weazel
5. Hickory Dickory dock
- 6 For He's a Jolly good Fellow
7. Blow the Man Down
8. Baa Baa
9. This Little Light of Mine
10. Oranges & Lemons
11. Theme from The Academic Festival Overture
12. Largo from Tshe New World Symphony
13. Trumpet Voluntary
- 14 Kum By Yah
15. Theme from Symphony no. 9 (Beethoven)
16. Amazing Grace
17. God Save the Queen
18. Close to Albert Square

Part 1

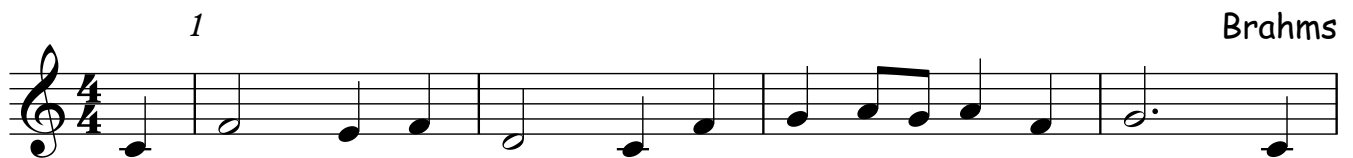
# 1. Can Can



# 2. Camptown Races



# 3. Theme from Symphony no.1



## 4. Pop Goes the Weazel

1

5

9

13

Musical notation for the first system of 'Pop Goes the Weazel'. It consists of four staves of music in 3/4 time, starting with a treble clef. The melody is written in a simple, stepwise fashion. The first staff starts at measure 1, the second at measure 5, the third at measure 9, and the fourth at measure 13. The piece ends with a double bar line at the end of the fourth staff.

## 5. Hickory Dickory Dock

1

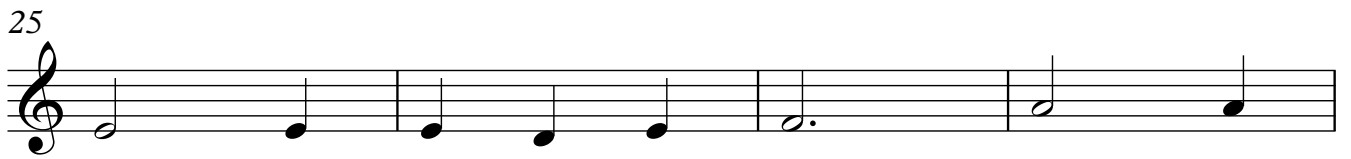
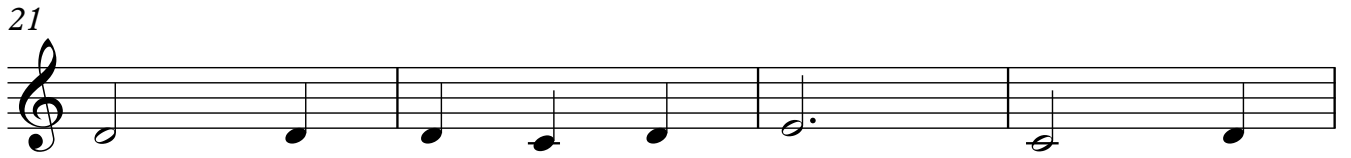
5

9

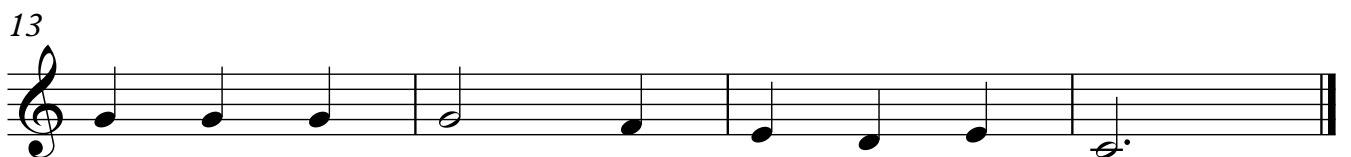
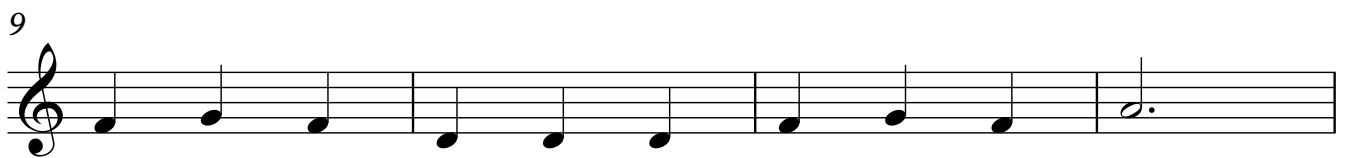
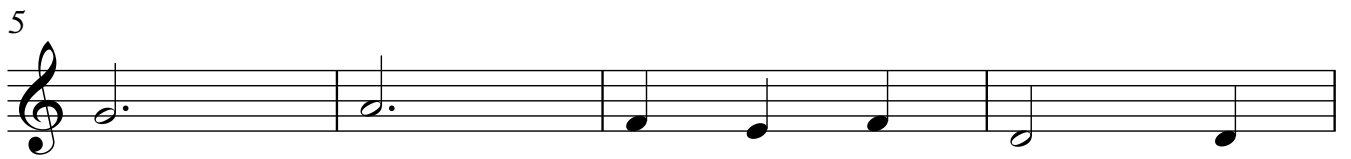
13

Musical notation for the first system of 'Hickory Dickory Dock'. It consists of four staves of music in 3/4 time, starting with a treble clef. The melody is written in a simple, stepwise fashion. The first staff starts at measure 1, the second at measure 5, the third at measure 9, and the fourth at measure 13. The piece ends with a double bar line at the end of the fourth staff.

# 6. For He's A Jolly Good Fellow



# 7. Blow the Man Down



# 8. Baa, Baa

1

5

9

Musical notation for the first three staves of 'Baa, Baa'. The first staff starts at measure 1, the second at measure 5, and the third at measure 9. The music is in 4/4 time and treble clef. The melody consists of quarter and eighth notes, with some beamed eighth notes.

# 9. This Little Light of Mine

1

5

9

13

Musical notation for the first four staves of 'This Little Light of Mine'. The first staff starts at measure 1, the second at measure 5, the third at measure 9, and the fourth at measure 13. The music is in 4/4 time and treble clef. The melody consists of quarter and eighth notes, with some beamed eighth notes.

# 10. Oranges and Lemons

1

5

Musical notation for the first two staves of 'Oranges and Lemons'. The first staff starts at measure 1, and the second at measure 5. The music is in 3/4 time and treble clef. The melody consists of quarter and eighth notes, with some beamed eighth notes.

# 11. Theme from Academic Festival Overture



# 12. Largo from The New World Symphony



# 13. Trumpet Voluntary

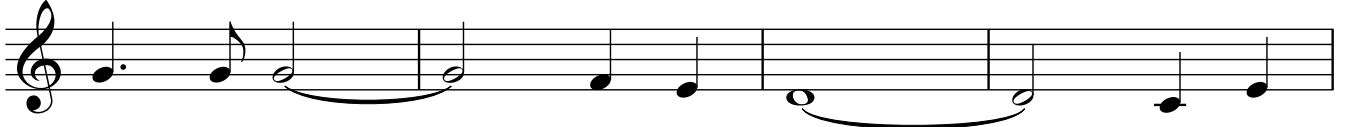


# 14. Kum By Yah

1



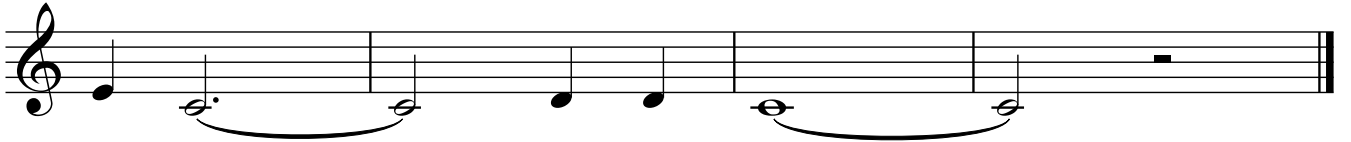
5



9



13



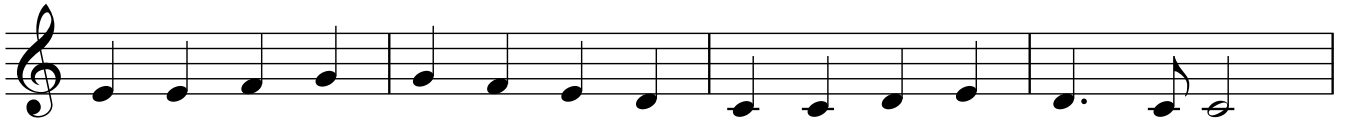
# 15. Theme from Symphony no. 9

Beethoven

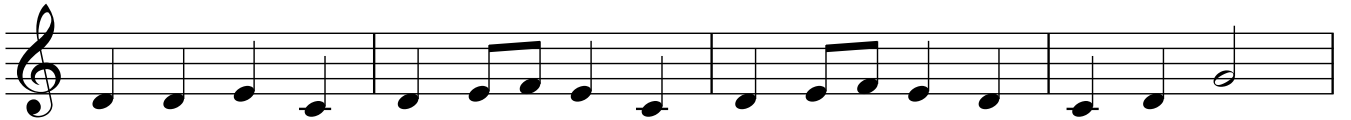
1



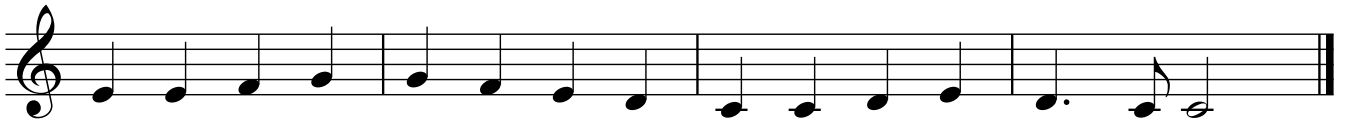
5



9



13



## 16. Amazing Grace

1

5

Musical notation for 'Amazing Grace' in 3/4 time. The first staff starts at measure 1 and the second staff starts at measure 5. The melody consists of quarter and eighth notes, with a slur over the final two measures of the second staff.

## 17. God Save the Queen

1

5

8

11

Musical notation for 'God Save the Queen' in 3/4 time. The first staff starts at measure 1, the second at measure 5, the third at measure 8, and the fourth at measure 11. The melody consists of quarter and eighth notes.

## 18. Close to Albert Square

1

5

Musical notation for 'Close to Albert Square' in 4/4 time. The first staff starts at measure 1 and the second staff starts at measure 5. The melody consists of quarter and eighth notes.